

THE Volume 2

Infinite

Issue 2

STREAMER

October 2023

*Melanin
Lisa*



THIS MONTH'S FEATURED USER:

DANYIELLE GATES



**INFINITE
BROADCASTING**

HIGHLIGHTS

- News- [The Relaunch of Spoon Radio](#)
- Opinion- [Downfalls Of Streaming](#)
- Feature- [Danyielle Gates](#)
- Tips- [Choosing A Platform \(MeetMe\)](#)
- Puzzles- [Issue 8](#)
- Infinite Spotlight
- Sponsors
- Sources

NEWS | OPINION | FEATURE | TIPS

This Just In-

The Relaunch of Spoon Radio

News

By Randi Patterson

WHAT WILL THIS RELAUNCH LOOK LIKE?

Have you ever wanted to start your own podcast, radio station, or just simply wanted to have a safe place to be able to express yourself? Well, Spoon Radio is a platform that provides that space for you! Spoon is an all inclusive audio radio streaming app where there are lives that are categorized as: LGBTQIA+, entertainment, gaming, and many more. The main goal of Spoon is to keep up on the tradition of radio but to also captivate Gen Z.

In the summer of this year, they shut down the app, however, they have made a comeback this the fall. Although there is not an exact reason that's been given as to why the app was shut down, they have adjusted their features, such as taking away the call in feature(which is similar to the Box on MeetMe or the Beam on Live Me).

Two noticeable new features that have been added include a community post where streamers can post anything they want, and a subscription feature for fans to subscribe to their favorite streamer. With a subscription you get a badge next to your profile as well as exclusive chat features that other fans do not have access to for that stream.

In my opinion, removing the call in feature on the audio live is a setback as it gave fans more opportunity to speak with the streamers without having to type long comments. Additionally, it allowed fans to be able to communicate with their favorite streamer on a more personal level. Allegedly, some streamers on the app believe this feature was taken away due to the endangerment of young users on the app. Will this feature be



Spoon Radio

IS THIS A FRESH RESTART OR A DISASTER?

modified and added back with more regulations or is it gone completely? Maybe if they have an age verification system like MeetMe does before users join the app or even possibly an age check when joining calls to speak with said favorite streamers, then it would make it safer!

“Without the internet- I would rather be able to bathe for good health.”

-Kazami Yuri, Spoon

Would you rather live without the internet or without bathing?

“Without bathing- if I chose the internet, that would render all my devices useless.”

-Caromel__, Twitch

Opinion

By Shaina Harry

W.D.Y.T? What Do You Think?

DOWNFALLS OF STREAMING

ARE THERE REALLY ANY DOWNFALLS TO STREAMING?

Over the past six to seven years, I have found that there are different downfalls to live streaming, and although it seems different for each platform, they all seem to be similar in ways. Let me know if you agree with me. A downfall is defined as something that is ruined or is ruining said thing. So a few things that come to mind that ruin streaming in my opinion



are Being Banned and Internet Connectivity

Being banned from a platform is never a fun thing although there are substantial reasons for it such as showing violence or having sexual content in a stream. But, what about when something is not your fault or you didn't technically break any rules? Live Me has a rule where you can't show white substances

on the stream and besides the obvious of what it could be for, there are plenty of things that we have around the house that are white; Glue, Ice Cream, you name it. So, is this really fair to those who aren't doing anything wrong?

Another common issue with live streaming on platforms is poor internet connection. It is a streamer's responsibility to ensure their connection and the reliability of their wifi is up to par. However, there are times where things are out of

WHAT DO YOU THINK ARE SOME DOWNFALLS TO STREAMING?

our control and the connection can drop due to weather or other factors. A great way to maintain the reliability and quality of your stream is by changing from wifi to a wired Lan if on a console or computer. It can greatly improve the credibility of your streams as well as the quality. When connected to wifi it still looks for the best wifi connection nearby causing your connection to drop in speed. Furthermore a wired Lan will actually be consistent in its speed and reliability. These are just a few downfalls in my opinion, but I am curious to hear what you have to say. You can always check out our very own [Infinite Broadcasting Forum](#) and even the [Specific Discussion Groups \(SDGs\)](#). There is a blog titled "[Is Streaming Really Streaming Anymore](#)" by Stevo which lists his five different reasons on why he feels that streaming is not the same as it used to be.

"Candles! Any one from Bath and Body Works, but no Peppermint."

-Carlie 🤔, Bigo

If you could have a lifetime supply of anything, what would it be?

"Money probably, lol."

-Numbing Time, Spoon

*This month's
Featured User- Musician*

DANYIELLE GATES

Feature

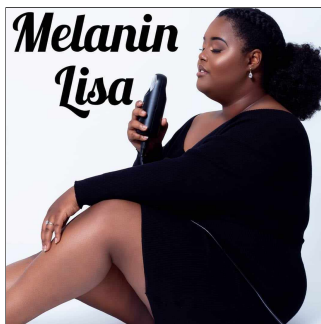
NEO-SOUL IN THE HOUSE!

We are halfway to reaching double digits when it comes to the Infinite Interview, so that is exciting. Another thing that is exciting is showcasing musicians, and this month, we got to speak with a phenomenal one!

Danyielle Gates currently lives in Indianapolis with her husband and has always had a background with theater and arts.

Tell us about yourself and how you got started doing music.

"I was going through a lot of depression with PCOS and found



myself going to work and sleeping consistently and knew that something was missing."

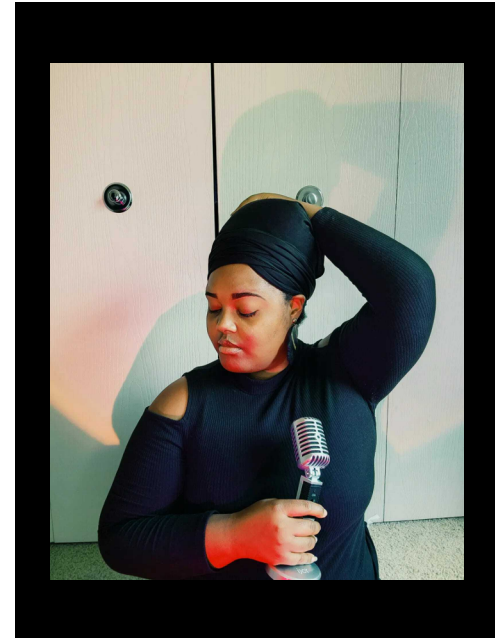
Did you plan to be where you are with music?

"I didn't even think I would get this far. When I first started, it was literally just a passion, but then I started thinking about what more I wanted to do with it."

How much wood could a wood chuck chuck if a wood chuck could chuck wood?

"Oh my, I'm just going to say one."

-We then looked up the real answer, which is 700lbs.-



If you could set up your own concert with no restrictions, where would it take place and what 5 artists would you have with you?

"At this moment, I am thinking about Scotland because of the Greenery; I love intimate spaces."



Sade, she is my absolute number one favorite, India Arie, Jazmine Sullivan, Brandy, and I'll throw SZA in there."

Best piece of advice for new musicians?

"Before you get into music, know who YOU are and NEVER feel bad about your standards for music"

Thanks again to Danyielle Gates! [Watch her Interview on YouTube.](#)

Danyielle during the interview

Check out her social media:

Facebook | YouTube | Spotify | Tik Tok

Tips

By Randi Patterson

Gimmie 2.5!

SOME TIPS TO HELP YOU BECOME A BETTER STREAMER!

THIS MONTH'S TIP: CHOOSING A PLATFORM (MEET ME)

DID YOU KNOW THIS AMAZING FACT?

64.6% of the GLOBAL population, or about 5.1 BILLION people, use the internet in one way or another.

Who's single and ready to mingle? Let me get you on something called MeetMe. which is an app that gives users the opportunity to connect with people near them as well as people that are further out from them. Most users are on the app to make connections with strangers to build a friendship or to find love. Originally, MeetMe was two separate apps (Quepasa and myYearbook) which were created by two New Jersey high school students, but it merged together in July 2011 to become what we know now as MeetMe, which was founded by CEO Geoff Cook.

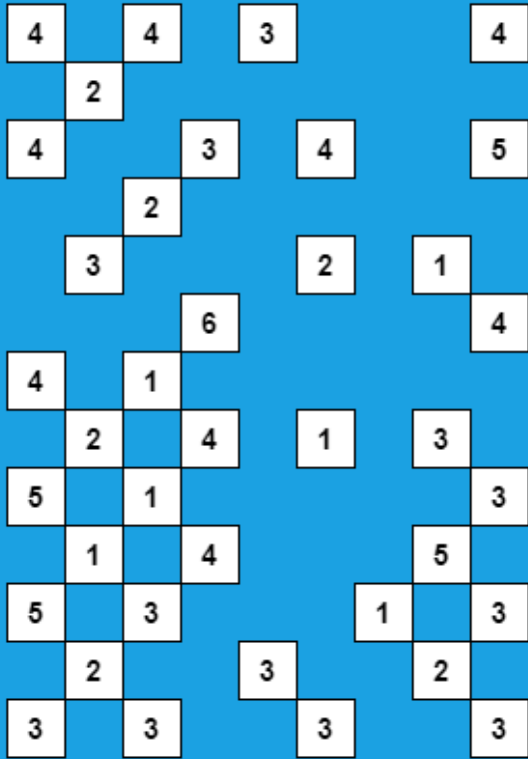
Creating a new account is easy; anyone interested can use their email or Facebook to sign up. After creating a profile, there will be accessibility given to access the headline, description, interests, and more in order to create the perfect profile that suits the user best. If you're looking to meet locals, click on the pin that says 'Locals' underneath it and a list of people near the location that was entered will populate options to chat or join live

streams in your area. Additionally users are able to look at chat requests and swipe on other users that they want to match. If you find yourself having any questions regarding your account refer to the [FAQ](#) page or if you need further help reach out to [MeetMe support](#) via email. A unique feature is the ability to live stream. Not only do users get the opportunity to meet new people but also connect with a live audience. When live streaming, there is potential to earn in app currency called diamonds. Other users have to send you gifts and for every diamond you receive it is five cents in US money. You are only able to withdraw money once you have earned the amount of a hundred dollars which is five hundred diamonds. A common mistake is that some users are under the impression you have to have an expensive camera and equipment to go live. In reality, all that is needed is your phone camera with a topic to talk about with others who share common interests. If you want to talk with other streamers who are on MeetMe, feel free to check out the [Infinite Broadcasting MeetMe Forum](#)

Looking to work with Infinite Broadcasting?
Reach out to us anytime!

Puzzles

Issue 8



BRIDGES #1

11		6		15	
9		6			
	13	8		10	7
9					
	13		5		
			14		

KILLER SUDOKU #2

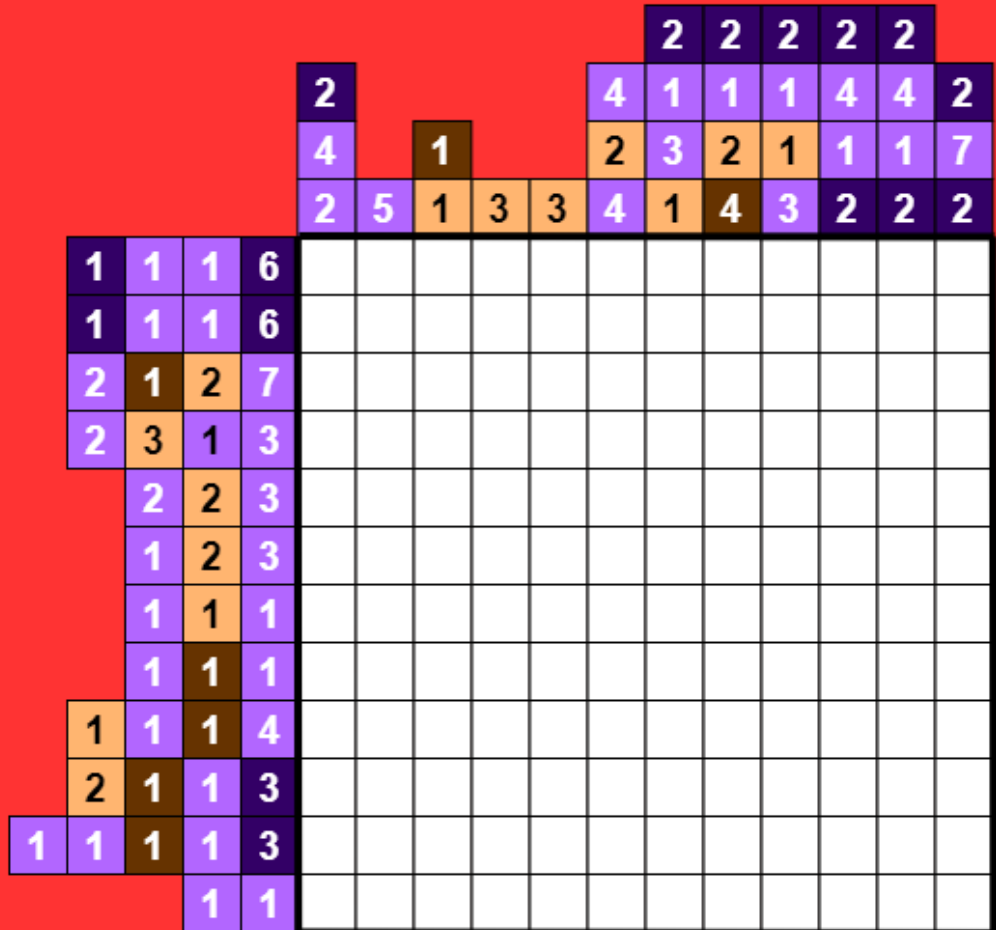
MISSING LETTERS #3

Dubious dealing under trees?

ANSWER-

Do you love Puzzles?
For each puzzle you complete you will gain
10 Free Rubies (Up to 50 Rubies per page).
Be sure to email your answers to
admin@infinitebroadcasting.com!

PICTURE CROSS #2



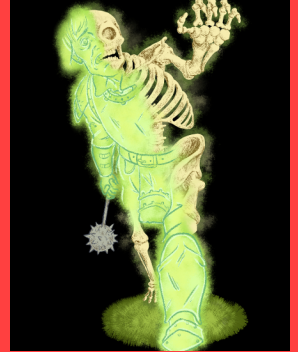
SUDOKU #8

6			3	2	
3				4	
	1	6			
2					
				3	
					5

Infinite Spotlight

Tom Gambino

Featured Artist of October 2023



Thanks to Tom and his AMAZING art! [Twitter](#) | [Instagram](#)



More Amazing Artwork!

Check out the **Infinite Spotlight** to get the ***Spotlight*** on your stream, art, or music! It is available for our **Silver**, **Gold**, & **Platinum** Members!



Want to share your music or your art with the community?

It's **FREE** to submit your work to the Infinite Broadcasting **Music Charts** and the Infinite Broadcasting **Gallery** if you would like to share your music or art with the community!

Sponsors

For sponsorship inquiry, please email us
Email- admin@infinitebroadcasting.com
Subject- Infinite Streamer Sponsorship

OG T-Shirt



IB Merch

OG SweatShirt



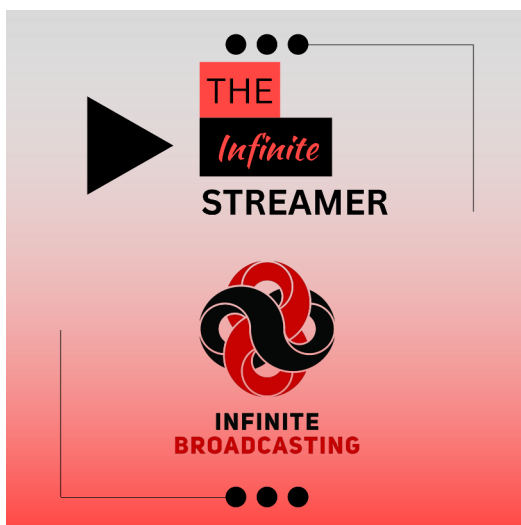
OG One Tone T-Shirt



Have you gotten any IB Merch yet?

Use code **IB15OFF** to get 15% off your order.

Valid until 10/31/23



Check out an episode of the Infinite Streamer Podcast, the podcast that dives deep into the vibrant world of live streaming and content creation. We feature the musicians from the Infinite Spotlight as well as have discussions on various topics. Listen on the **Podcast page** or on your favorite streaming sites.

Sources

Page 2-

1. "Spoon Radio - Heralding a New Heyday of Radio with Online Streaming." *KED Global*, KED Global, 31 Dec. 1969, www.kedglobal.com/kunicornsView/kun0003.

Picture- https://play.google.com/store/apps/details?id=co.spoonme&hl=en_US

Page 3-

1. Picture-

<https://www.google.com/url?sa=i&url=https%3A%2F%2Fwww.wasserruss.com%2Faugust-2019-cannabis-news%2F&psig=AOvVaw0YaWJBsOIDIeK5Jq7WvZfj&ust=1697190087961000&source=images&cd=vfe&opi=89978449&ved=0CBAQjRxqFwoTCMDEyfSb8IEDFQAAAAAdAAAAABAE>

Page 5-

1. <https://www.themeetgroup.com/#:~:text=Originally%20founded%20in%202005%2C%20MeetMe,new%20people%20in%20the%20US.>

2. <https://help.meetme.com/portal/en/kb/meetme>

3. <https://www.themeetgroup.com/>

4. <https://www.infinitebroadcasting.com/forum/meetme>

Tip-

1. <https://www.statista.com/statistics/617136/digital-population-worldwide/#:~:text=Worldwide%20digital%20population%202023&text=As%20of%20July%202023%2C%20there,population%2C%20were%20social%20media%20users.>

Contact



Website- www.infinitebroadcasting.com

Email- admin@infinitebroadcasting.com

Newsletter Editor- Stevo "So Evol" Somerville

IB Manager- Randi Patterson

IB Newsletter Manager- Shaina Harry

© 2023 Infinite Broadcasting®. All rights reserved



**INFINITE
BROADCASTING**